

Quick Guide

EzSensor Classic & HD

IOS-U20IF, IOS-U15IF, IOS-U10IF, IOS-U20IB, IOS-U15IB, IOS-U10IB

vatech

Distributed by VATECH America Inc.

2200 Fletcher Ave. Suite 705A, Fort Lee, NJ 07024
Tel: +1-888-396-6872 www.vatechamerica.com

rayence

Manufactured by Rayence Co., Ltd.




14, Samsung 1-ro 1-gil, Hwaseong-si, Gyeonggi-do, Korea
Tel: +82-31-8015-6245 www.rayence.com

Notice

This document should be used as a guide only for the instruction of EzSensor Classic & HD. For the Improvement of product performance, supplementation, and follow-up information, the content of this manual can be subject to change without prior notice.

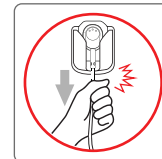
For detailed information, please refer to an electronic copy of the user's manual located in the USB flash drive.

EzSensor Classic & HD will both be referred to as “Product” throughout the rest of this Quick Guide.

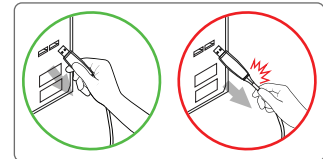
	Indicates useful information and tips on how to use our software and Products.
	Indicates important instructions. If not observed, malfunction or damage to the Product or other property may occur.
	Indicates warnings and safety instructions. If not adhered to, the patients and/or the operator may be at a serious risk of injury.

Product Handling Precautions

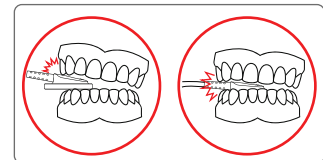
1) Do Not pull the cable with force.



2) Hold the USB connector body when removing.



3) Do not bite the sensor or the cable.

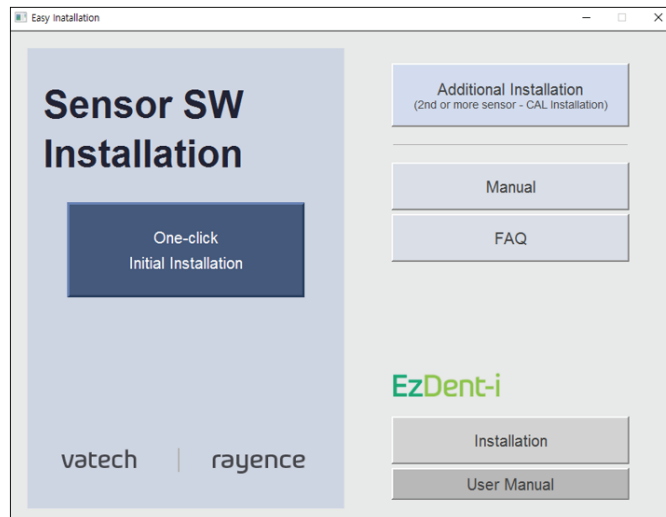


DO NOT modify this equipment without authorization from the manufacturer.

Product Installation

1) Description

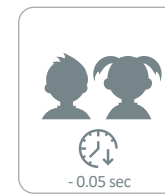
Select 'One-click Initial Installation' in order to install all sensor operation related files.



X-ray usage

The table shown below is a basic X-ray condition guide. Please be reminded to decrease the exposure time 0.03 ~ 0.05 secs while acquiring images from children and female (under 120 lbs / 55 kg) patients.

Energy		60KV		70KV		Unit
SSD		9"	12"	9"	12"	
Maxillary	Incisor	0.14	0.25	0.1	0.17	sec
	Cuspid	0.14	0.25	0.1	0.17	
	Molar	0.19	0.35	0.16	0.30	
Mandibular	Incisor	0.14	0.25	0.1	0.17	
	Cuspid	0.14	0.25	0.1	0.17	
	Molar	0.16	0.30	0.14	0.25	
Bitewing		0.16	0.30	0.14	0.25	



Depending on the patient, you may need to change the X-ray expose condition.

Image Acquisition Procedure

- 1) Turn on the computer.
- 2) Run EzDent-i.
- 3) Configure the required x-ray parameters (exposure time, etc.) for the x-ray generator.
- 4) Perform an operation test during the initial installation phase, prior to use on patients. Place a flat object, such as a coin, on the flat receptor of the Product and test the x-ray exposure for proper imaging.
- 5) Position the Product at the appropriate area in the mouth. The flat receptor side of the Product must face the x-ray source.
- 6) If possible, the use of the parallel technique with a positioning system or device is highly recommended.
- 7) After preparing the Product for exposure, acquire an image by pressing the exposure button of your x-ray source.



Note that the receptor side is marked with a label for ease of recognition. The use of the Product positioning aid is recommended to guarantee that the product is parallel to the tooth and is at the appropriate angle for exposure.



Using the product with intraoral x-ray

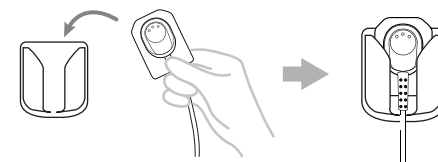


Using the product with a product positioning system (optional)

Maintenance

1) Storage method

Properly place the Product in its holder while not in use.



2) Product Cleaning

To clean the Product, please observe the precautions noted.

- Mild soap and water
- Isopropyl alcohol (70%)
- Most alcohol and ammonia-based cleaners
- Mild, non-abrasive cleaners

Immerse the Product in either of the cleaning solutions listed above for less than 60 seconds. After properly disinfecting the Product, use a dry cloth to clean the surface. Use of another type of disinfectant may cause discoloration in the Product but will not cause malfunction. Gently wipe the surface in a straight line from end-to-end without applying heavy pressure. It is recommended to use a lint-free cloth to completely dry the product as necessary.



Do not use the following cleaning materials.

- Hard brushes or scrapers of any kind
- Strong acids or alkaloïds