



# **Panorama Positioning and Troubleshooting Guide**

---

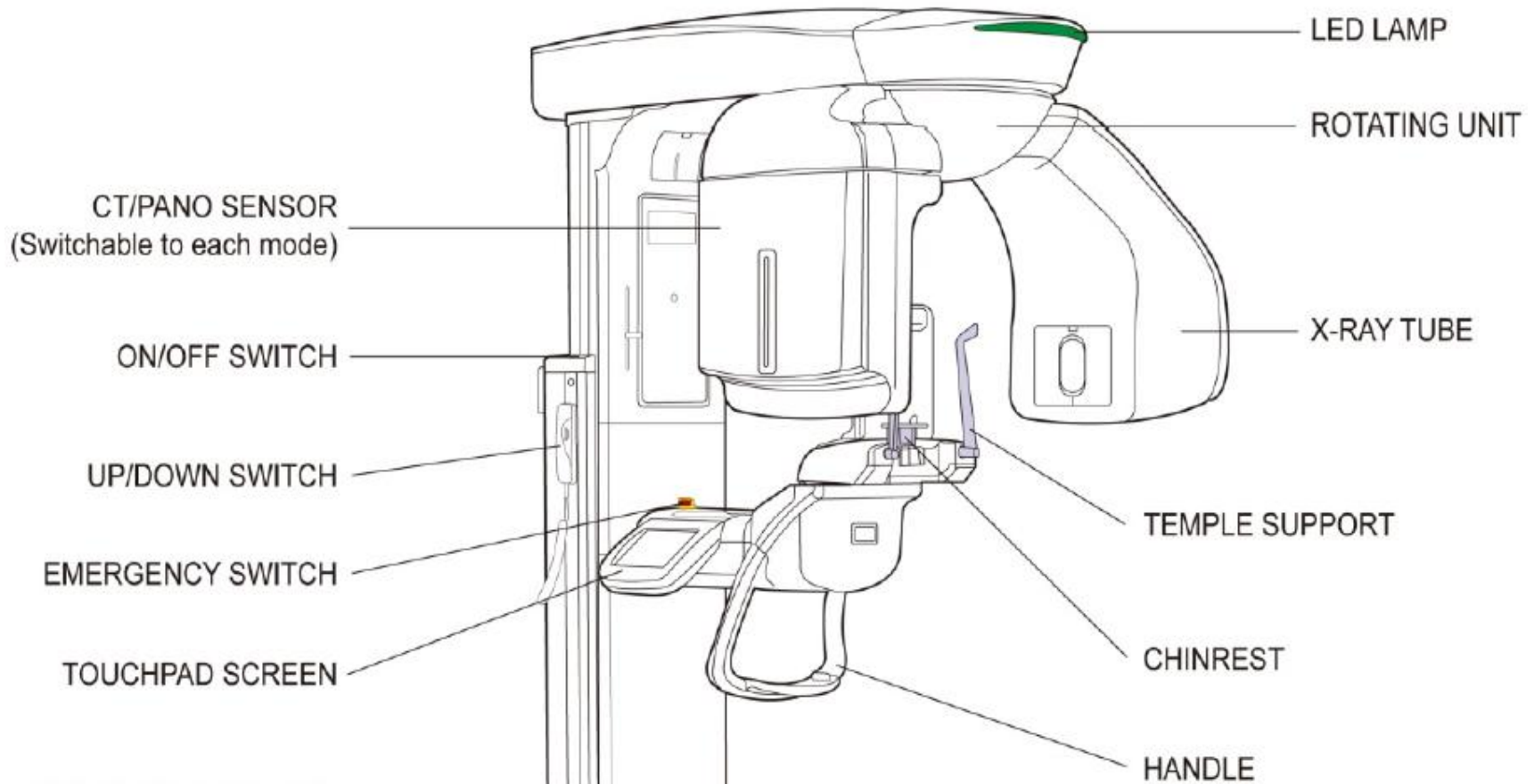
**Date : January 2013**

**The Education Team**

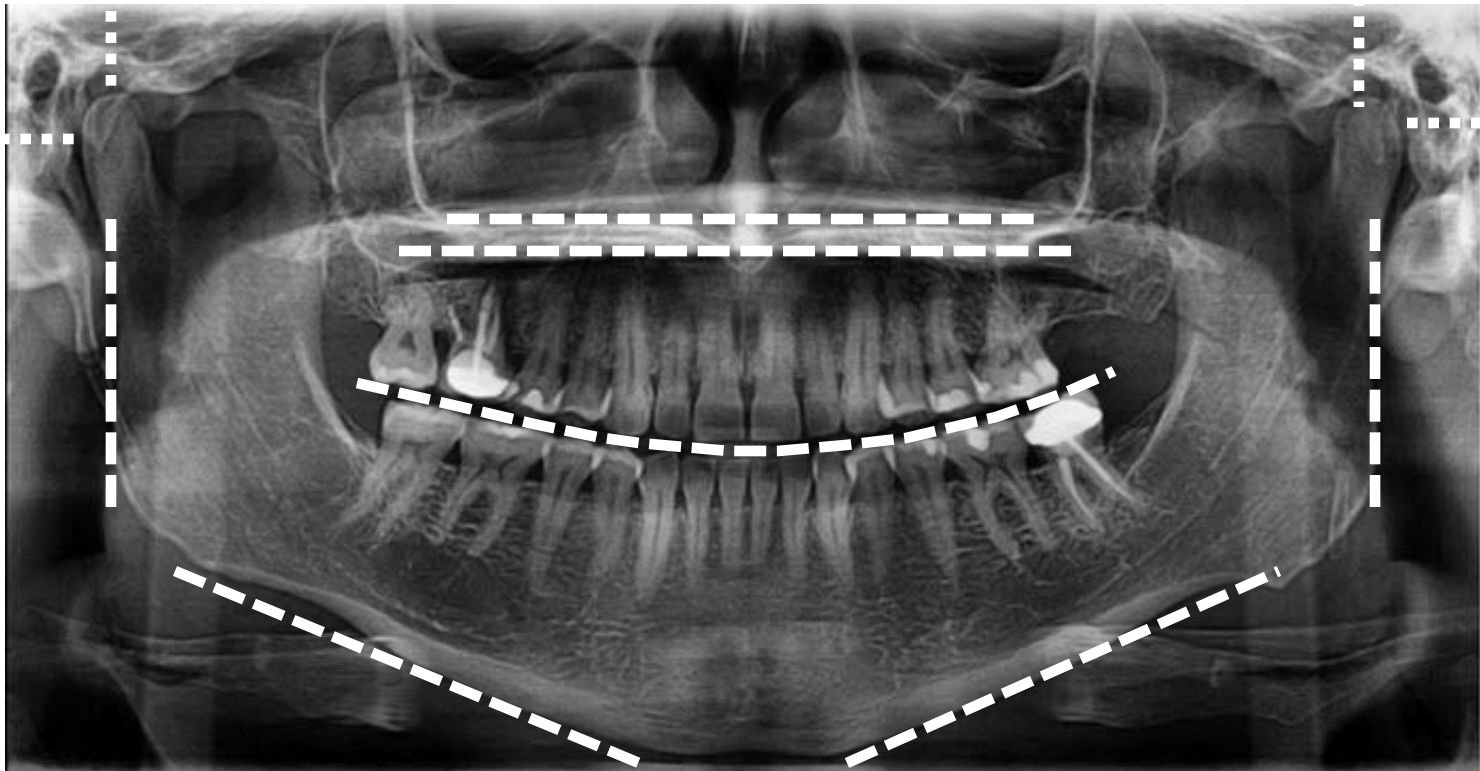
**VATECH America, Inc.**

1. Components of a Panorama (Pan) Device
2. Seven (7) Key Aspects of a Diagnostically Accurate Pan Image
3. Proper Patient Positioning for a Successful Pan Image
4. Panorama Troubleshooting Guide

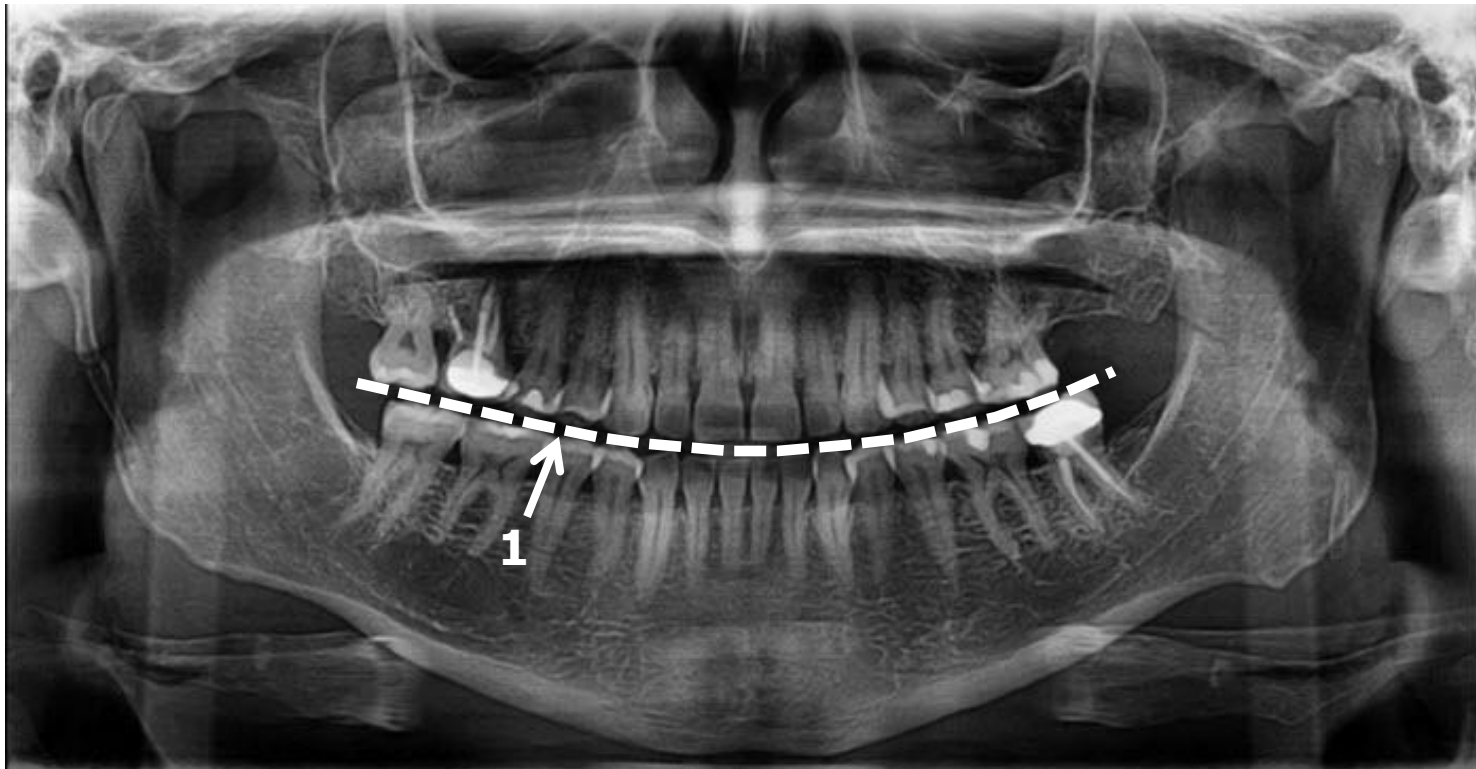
## 1. Components of a Panorama (Pan) Device



## 2. Seven (7) Key Aspects of a Diagnostically Accurate Pan Image

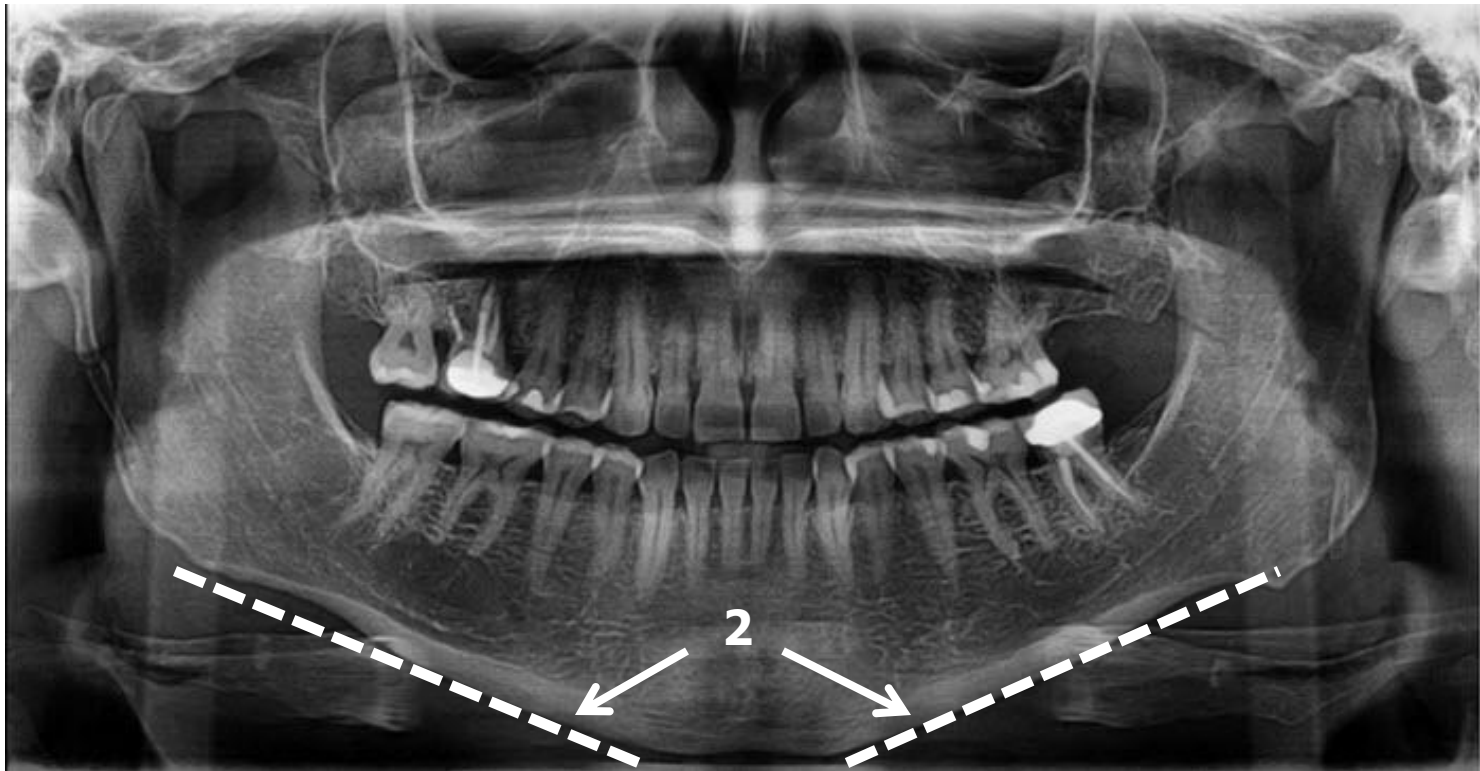


## 2. Seven (7) Key Aspects of a Diagnostically Accurate Pan Image



1. The Occlusion should have an upward curved 'smile' effect

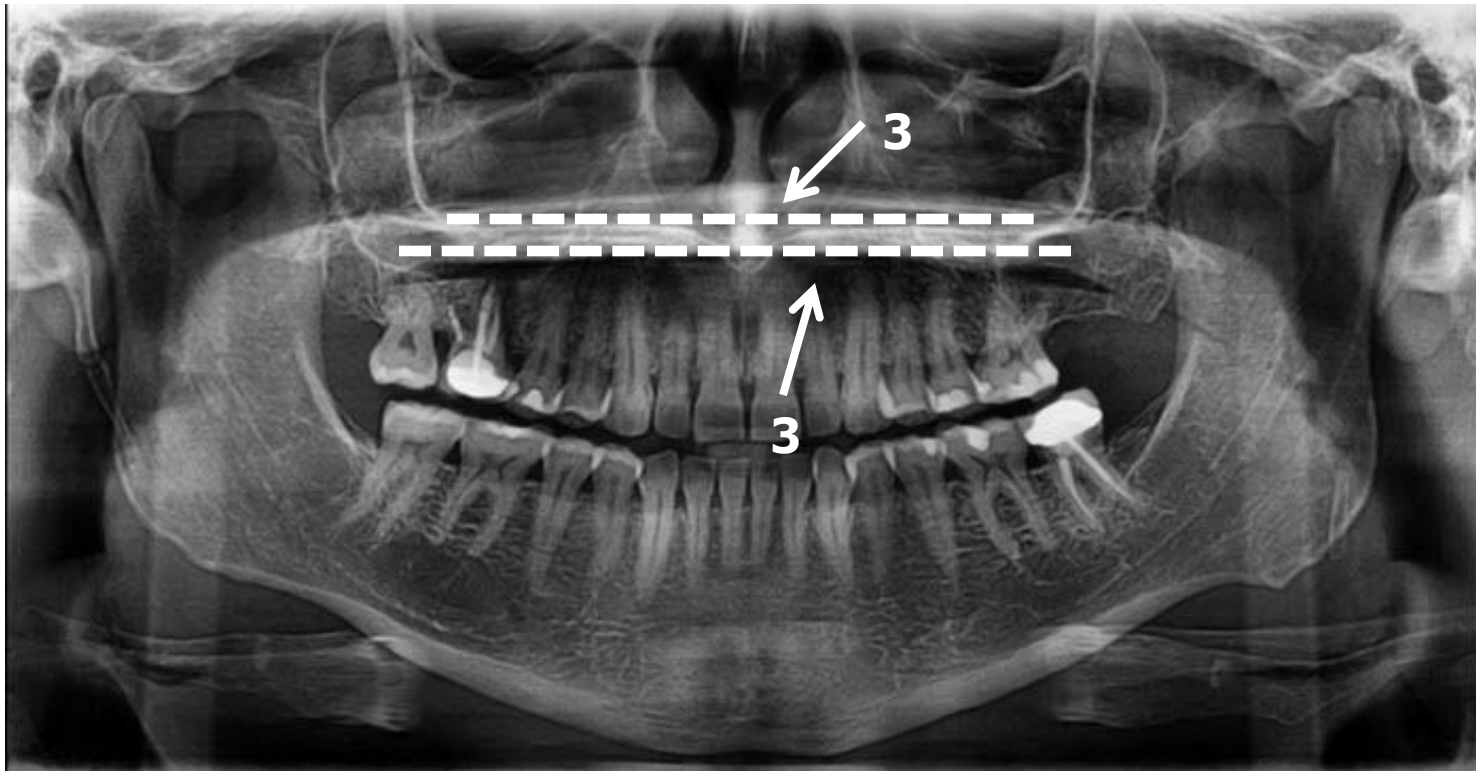
## 2. Seven (7) Key Aspects of a Diagnostically Accurate Pan Image



2. The Mandible should be inclined approximately 15 – 20 degrees



## 2. Seven (7) Key Aspects of a Diagnostically Accurate Pan Image



3. The Anterior and Posterior of the Maxilla should be separated vertically.

## 2. Seven (7) Key Aspects of a Diagnostically Accurate Pan Image



4. The Ramus should be vertical and equal distance from the edge of the image



## 2. Seven (7) Key Aspects of a Diagnostically Accurate Pan Image



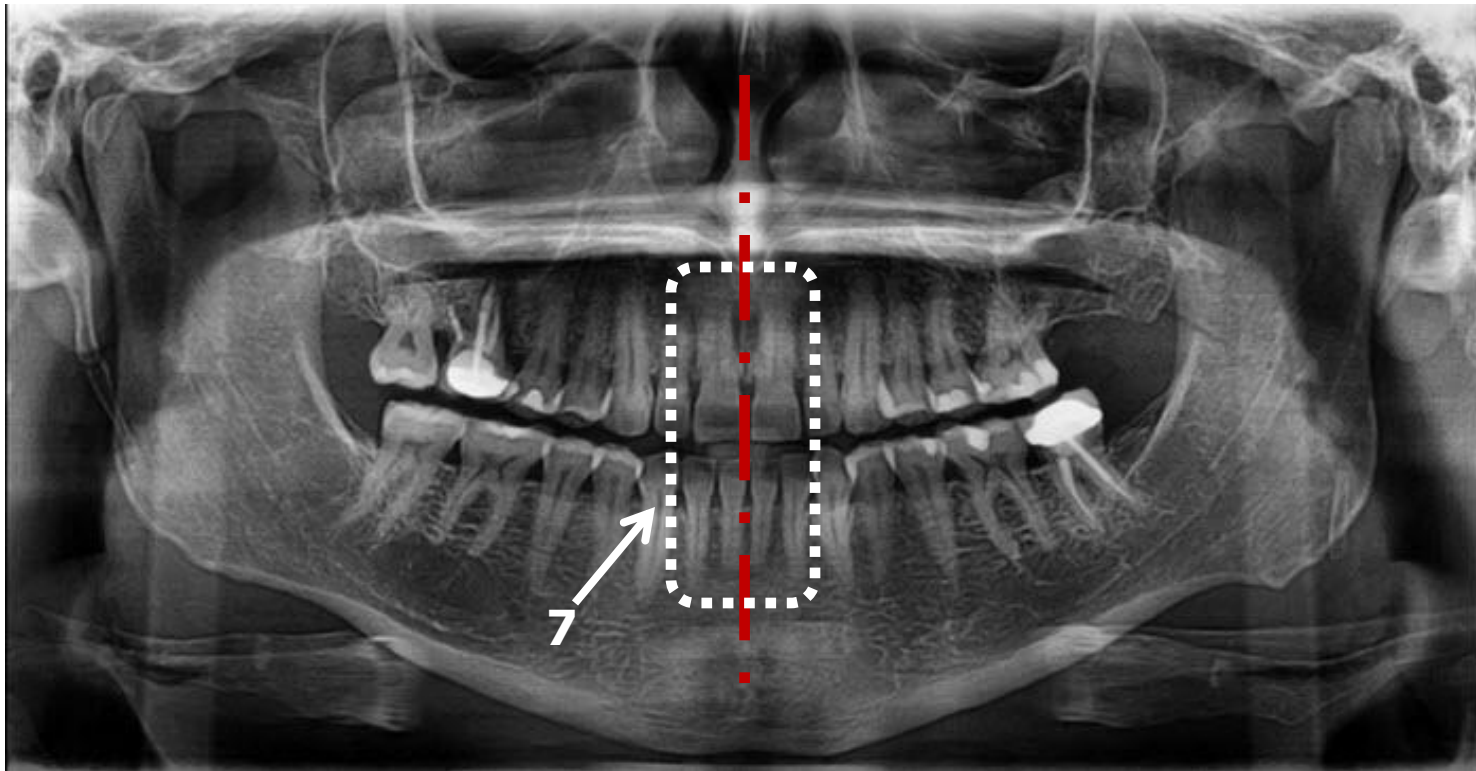
5. The Condyle should be equal distance from the sides of the image

## 2. Seven (7) Key Aspects of a Diagnostically Accurate Pan Image



6. The top of the Condyle head should be level and equal distance from the top of the image

## 2. Seven (7) Key Aspects of a Diagnostically Accurate Pan Image

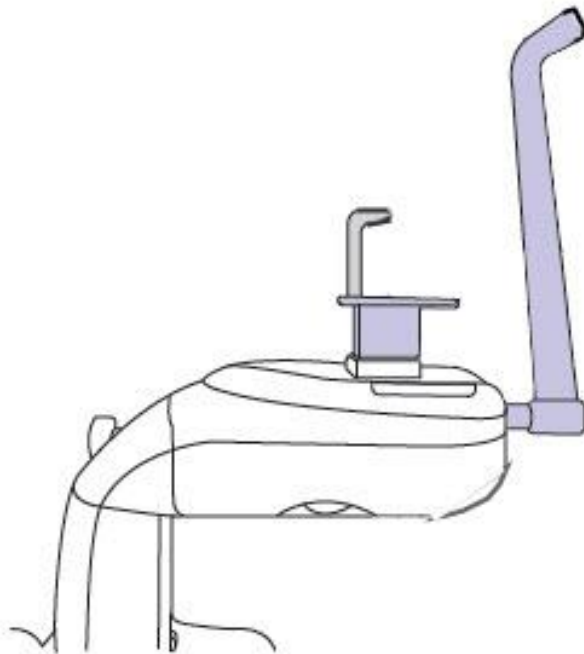


7. The Anterior teeth should be in the center of the image

## 3. Proper Patient Positioning for a Successful Pan Image



## 3. Proper Patient Positioning for a Successful Pan Image



### **Step 1 –**

Insert the normal chin support and bite block in the unit's chinrest adaptor.

Place a new hygienic cover over the bite block.

## 3. Proper Patient Positioning for a Successful Pan Image



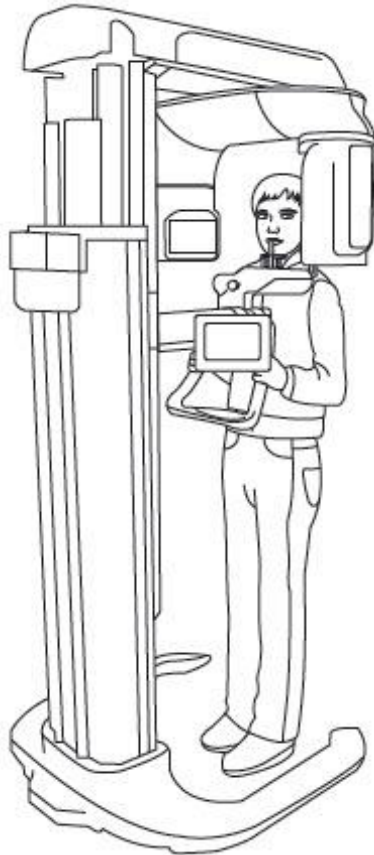
### **Step 2 –**

Have the patient remove all jewelry and metallic objects, such as earrings, hair pins, spectacles, dentures, and orthodontic appliances.

These items can cause shadow images that may obscure diagnosis.



## 3. Proper Patient Positioning for a Successful Pan Image

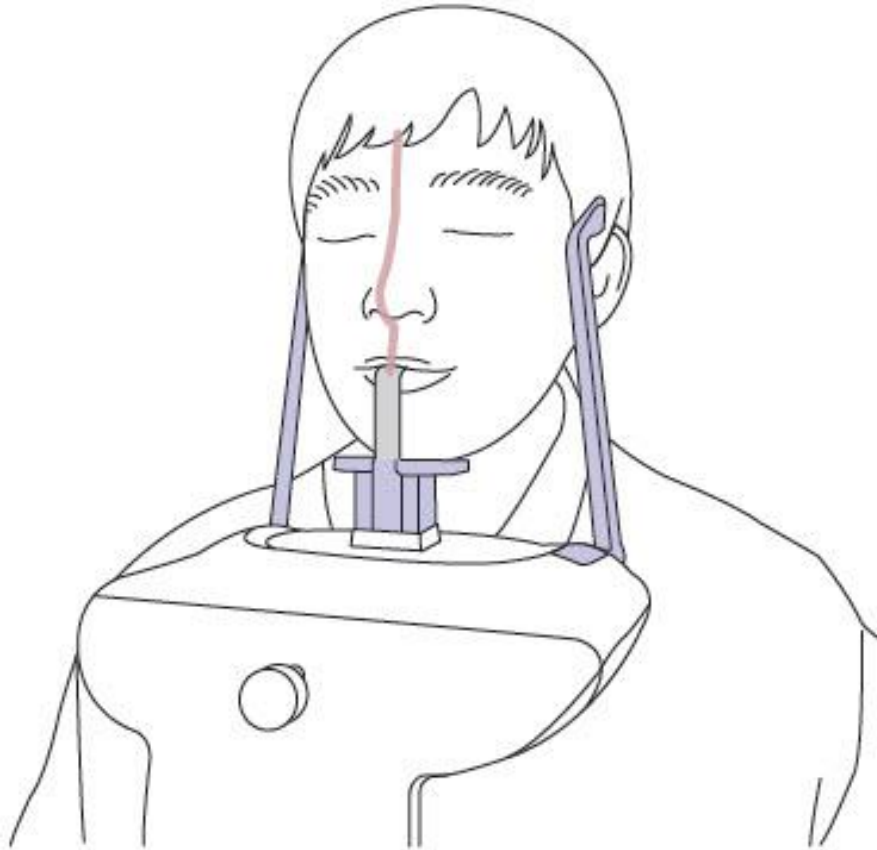


### **Step 3 –**

Have the patient stand upright at the center of the machine with the chin in line with the chinrest.

Ask the patient to firmly grip the handles on both sides of the unit. Ask the patient to position the feet slightly forward.

## 3. Proper Patient Positioning for a Successful Pan Image

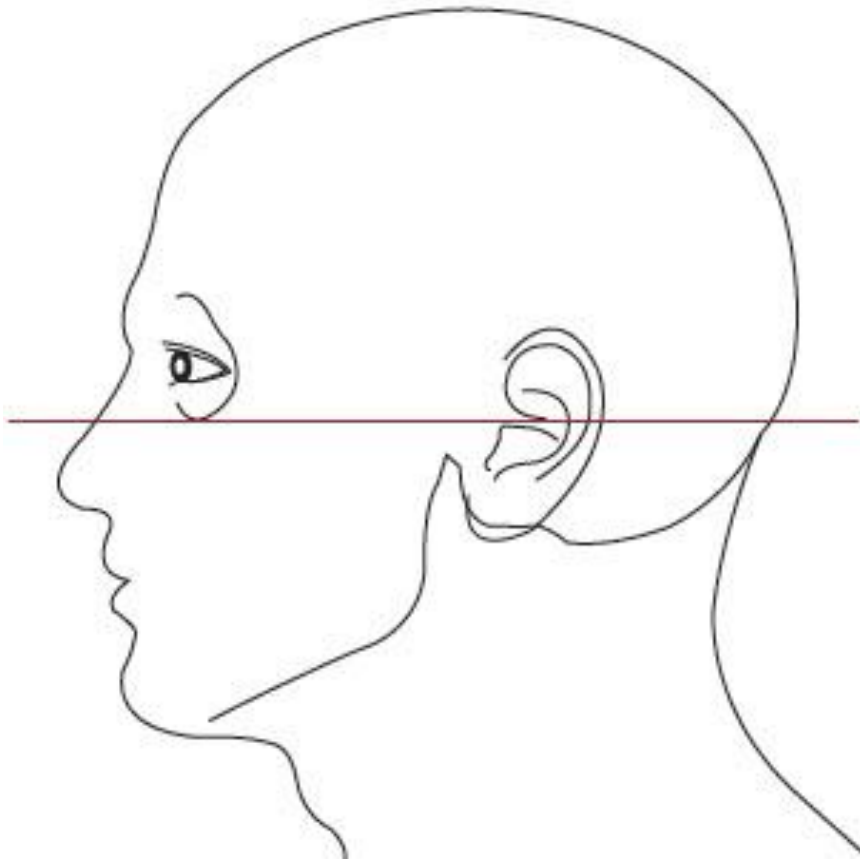


### Step 4 –

Ensure that the patient's shoulders remain level and the neck is relaxed.

To prevent magnifications on the left and right sides of the final image, make sure that the vertical laser beam (mid-sagittal) is in between the eyebrows and center of the upper lip.

## 3. Proper Patient Positioning for a Successful Pan Image

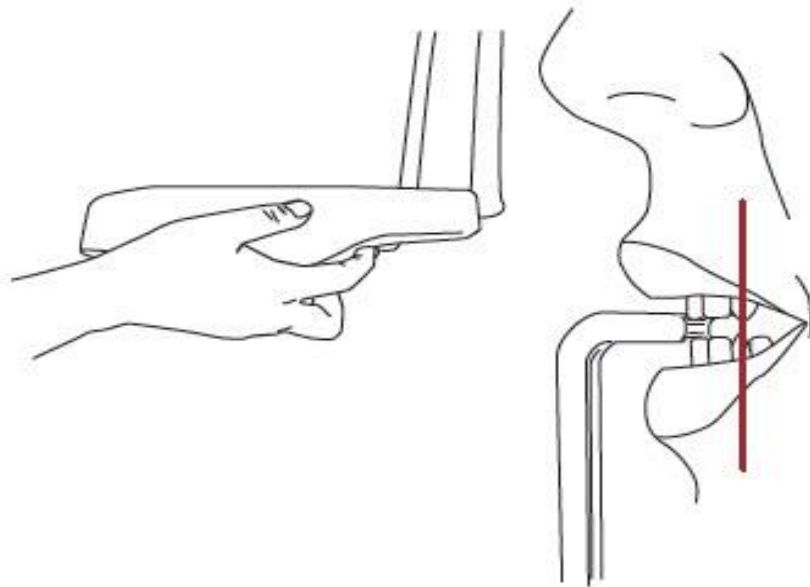


### Step 5 –

Position the head of the patient to properly align the Frankfort plane with the horizontal laser beam.

For proper positioning, adjust the chin by elevating or lowering the device until the laser light passes thru the top of the tragus and thru the lower border of the orbit.

## 3. Proper Patient Positioning for a Successful Pan Image

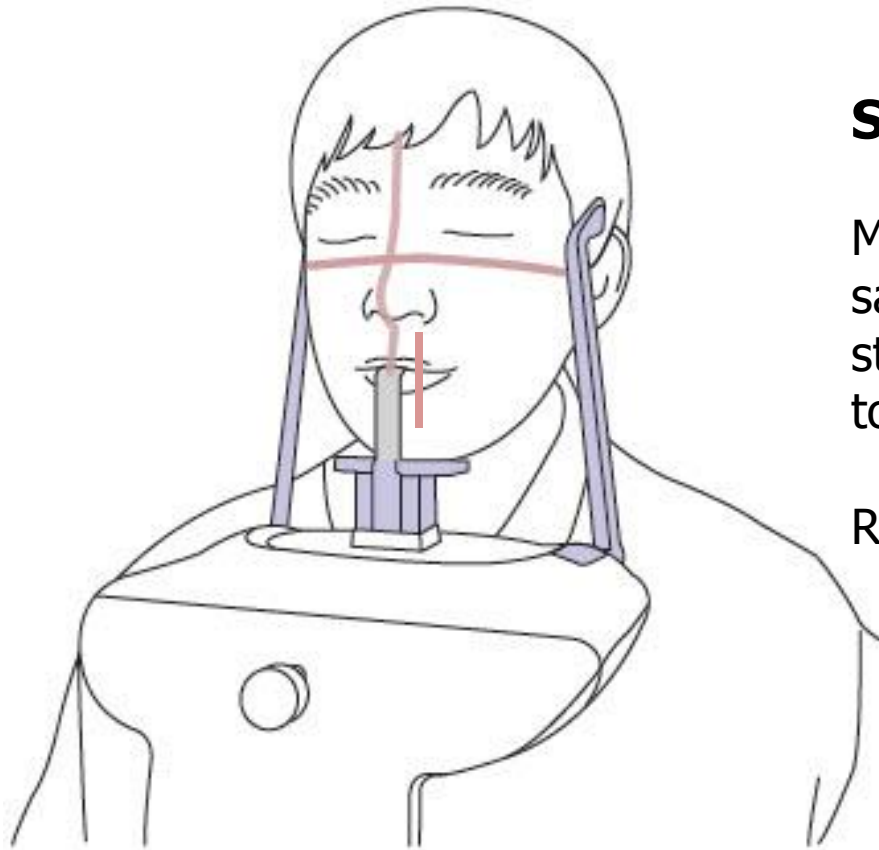


### Step 6 –

Have the patient smile to properly position the canine laser beam at the center of the patient's canine tooth.

Rotate the thumb wheel, located under the patient support rest forward and backward to properly align the beam.

## 3. Proper Patient Positioning for a Successful Pan Image



### Step 7 –

Make sure that all 3 light beams (Mid-sagittal, Frankfort, Canine beams) are still positioned correctly corresponding to the imaging mode.

Reposition them if necessary.

## 3. Proper Patient Positioning for a Successful Pan Image



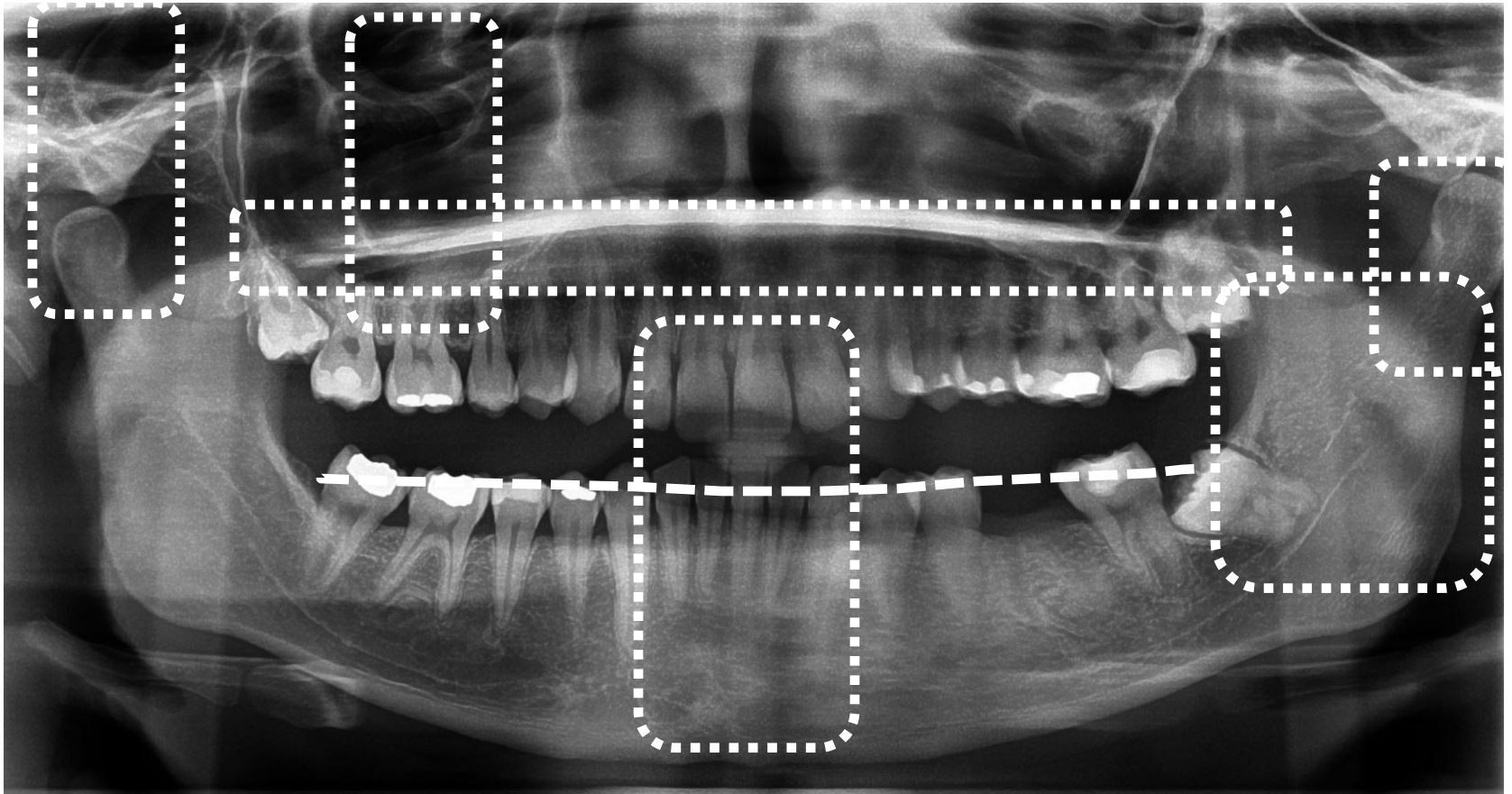
### Step 8 –

Adjust the temple supports to fit firm on both sides of the patient's head using the temple support wheel.

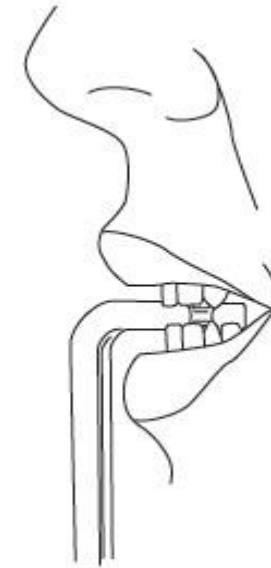
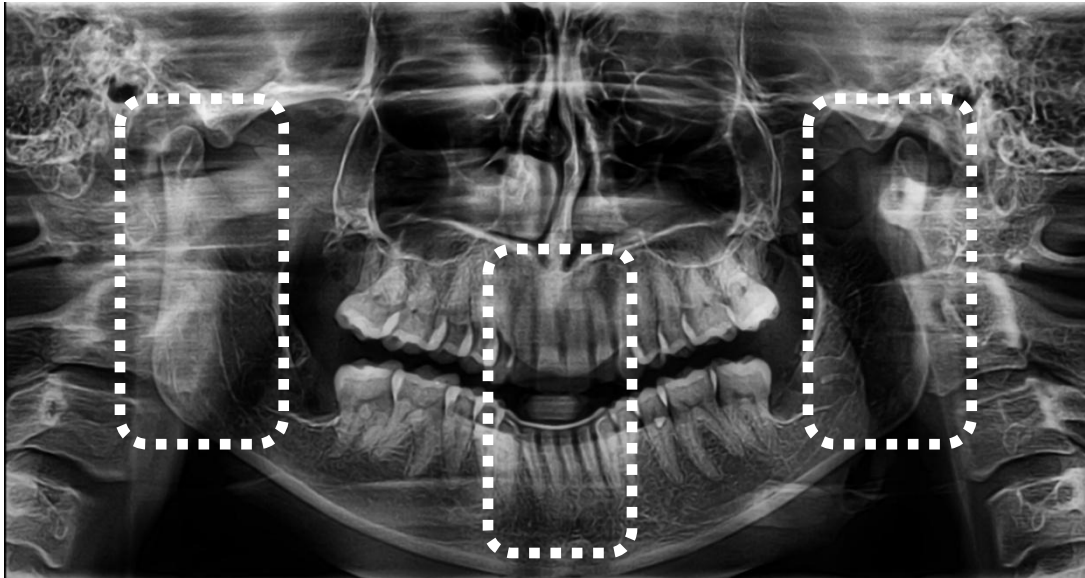
The patient's head also needs to be immobile and stable. Have the patient close the lips and keep the entire tongue pressed against his or her palate throughout the image acquisition. Lastly, ensure that the patient's eyes are closed throughout the acquisition to increase stability and immobility.



## 4. Panorama Troubleshooting Guide



## 4. Panorama Troubleshooting Guide – Patient is positioned too far forward

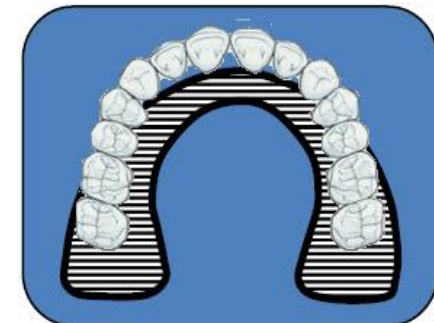


### **Issue:**

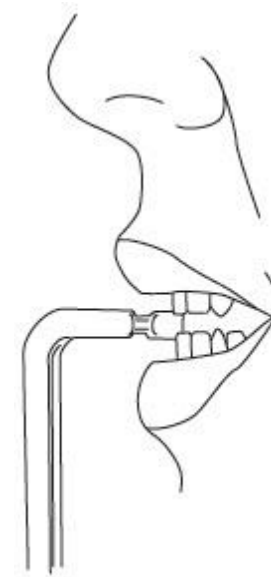
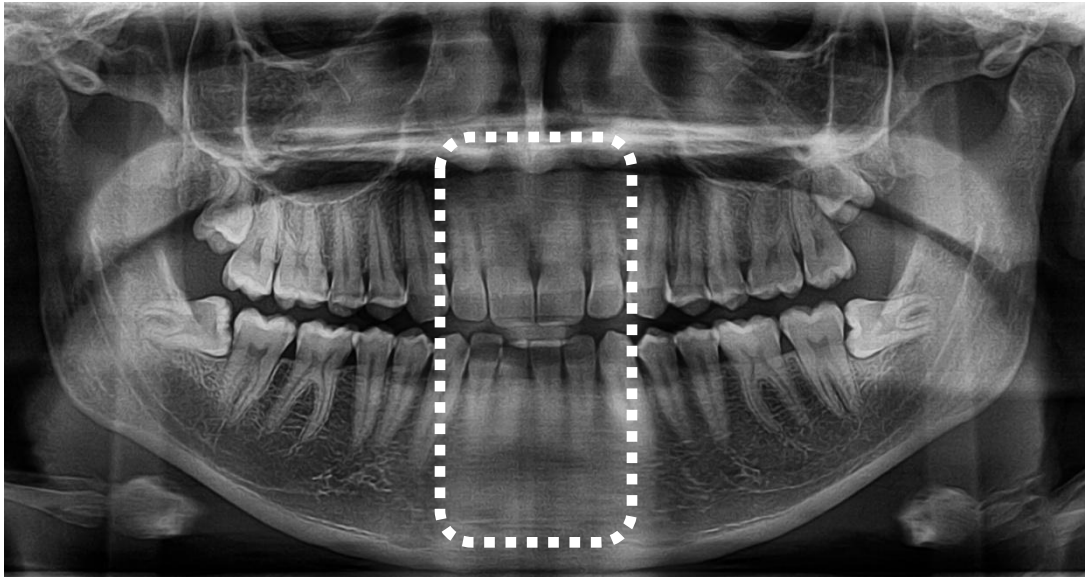
- Anterior teeth are blurred and minimized.
- Spine is superimposed over condyles.

### **Solution:**

- Ensure incisors are in the bite block grooves and align canine light properly.



## 4. Panorama Troubleshooting Guide – Patient is positioned too far backward

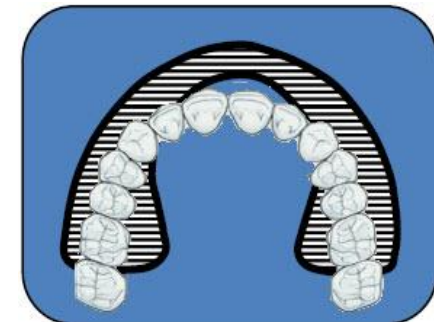


### ***Issue:***

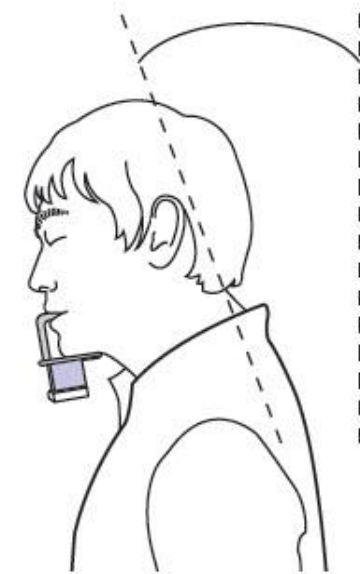
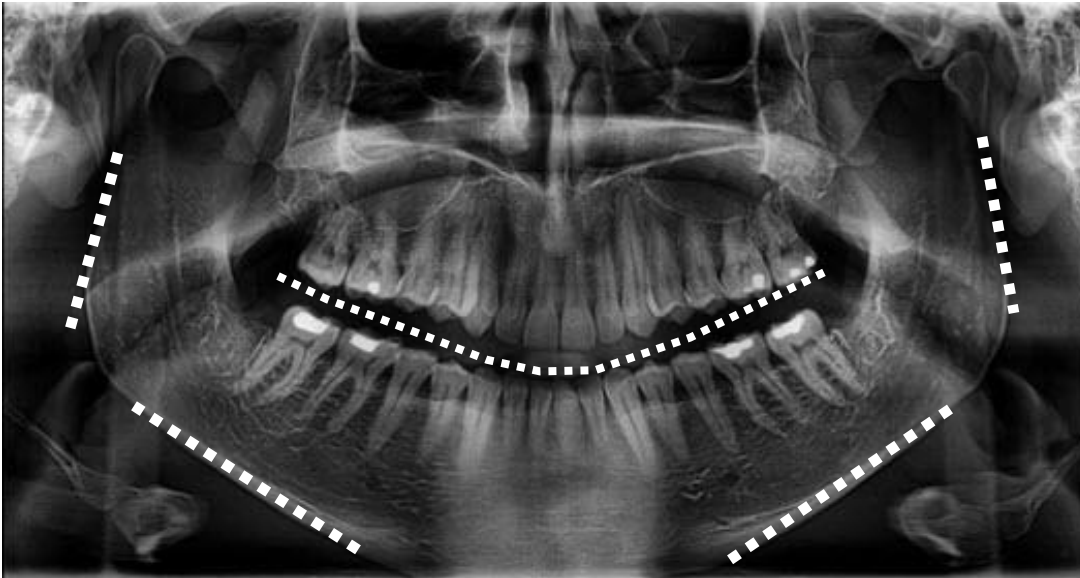
- Anterior teeth are magnified and unclear.
- White out caused by ghost image of cervical spine in the middle and mandible burn out.

### ***Solution:***

- Ensure incisors are in the bite block grooves and align canine laser light to the center of the canine tooth.



## 4. Panorama Troubleshooting Guide – Patient head is tilted too far down



### ***Issue:***

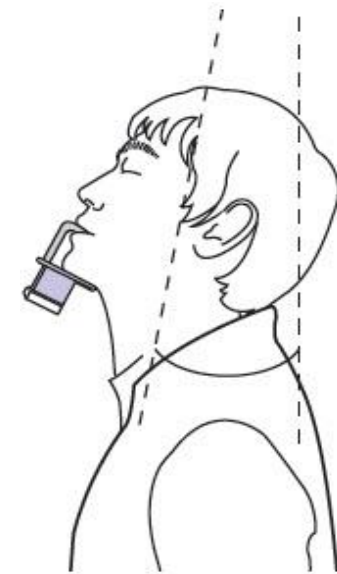
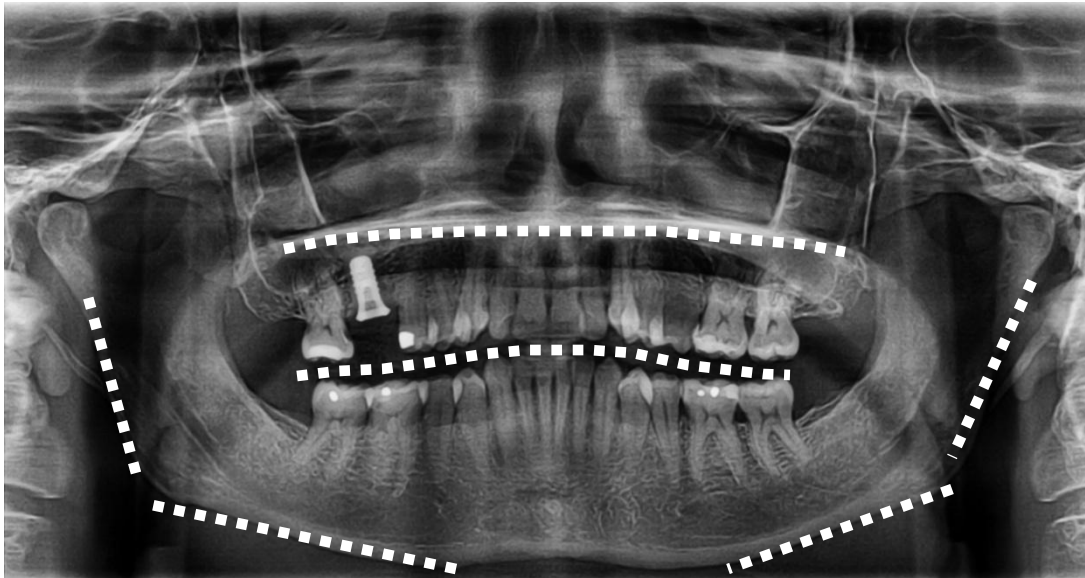
- Upward and steep curvature of occlusal plane.
- Lower border of the Mandible is extremely steep.
- The Ramus is tilted inward.
- Lower incisors are foreshortened.

### ***Solution:***

- Raise chin until the Frankfurt Plane is aligned properly.



## 4. Panorama Troubleshooting Guide – Patient head is tilted too high



### **Issue:**

- Occlusal plane flattened.
- Condyle heads are flared out toward the edge of image
- The anterior and posterior border of the Maxilla are superimposed
- Lower Border of the Mandible is flattened.

### **Solution:**

- Lower chin rest until Frankfurt plane is aligned properly.

## 4. Panorama Troubleshooting Guide – Patient head is tilted

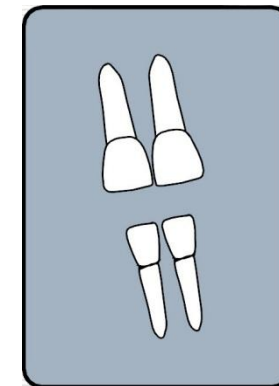


**Issue:**

- Magnification ratio of right and left side looks different.

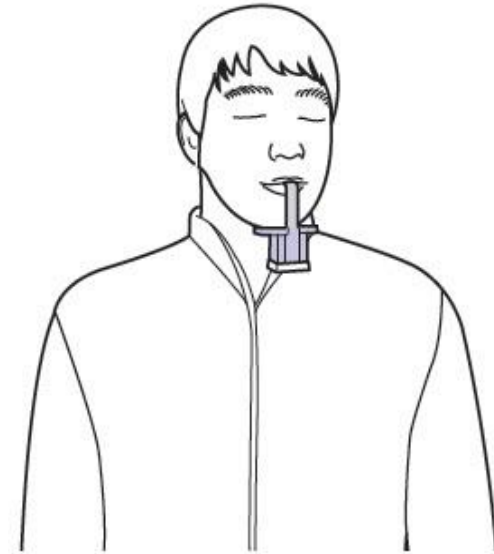
**Solution:**

- Adjust mid-sagittal beam correctly to the center of the patient's face





## 4. Panorama Troubleshooting Guide – Patient head is turned to one side

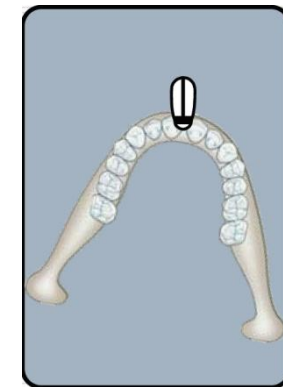


### ***Issue:***

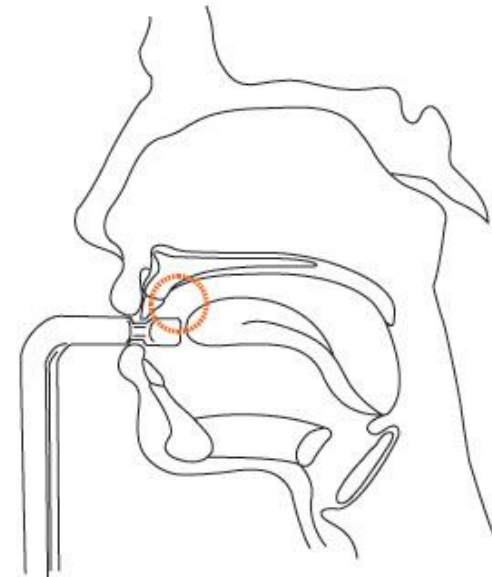
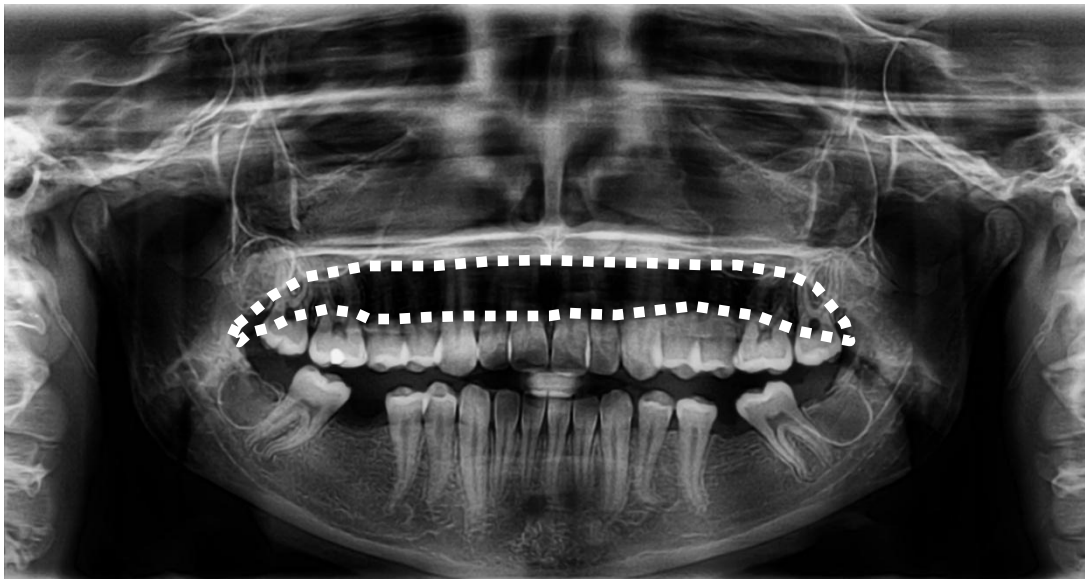
- Patient's left side is enlarged compared to right.

### ***Solution:***

Ensure the Patient's head is positioned symmetrical in the device and temple rods are positioned properly.



## 4. Panorama Troubleshooting Guide – Tongue is not pressed against palate

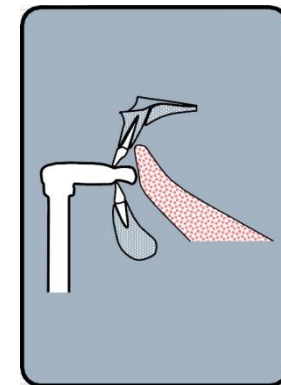


### **Issue:**

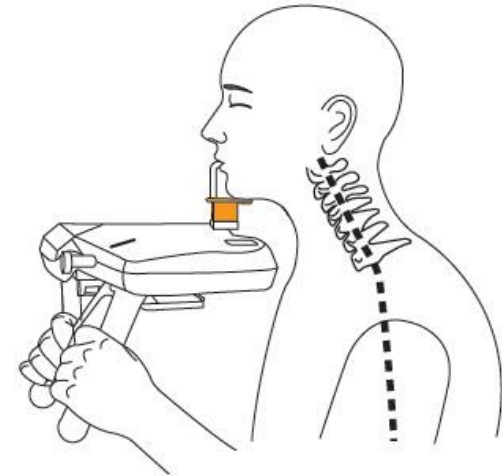
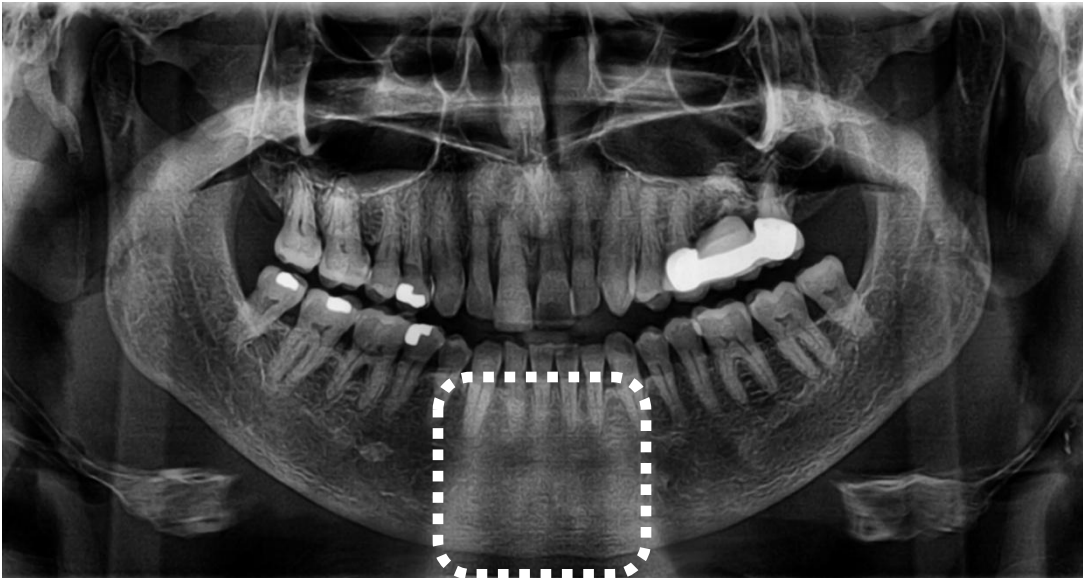
- Large airway shadow directly over the roots of the maxillary teeth.

### **Solution:**

- Patient's tongue is not being placed on the hard palate during the exposure.



## 4. Panorama Troubleshooting Guide – Spine is compressed or slumped



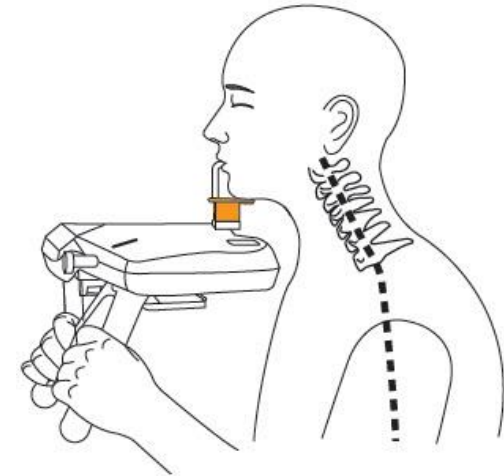
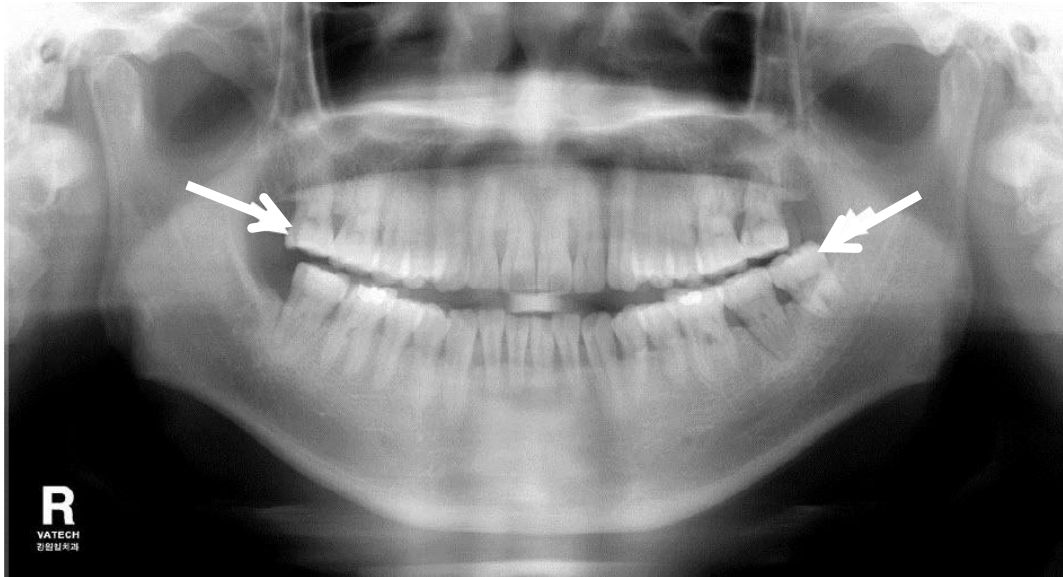
### ***Issue:***

- White tapered washed out region in the anterior area of the mandible.

### ***Solution:***

- Ensure the patient is standing upright and keep the spine vertical.

## 4. Panorama Troubleshooting Guide – Patient moves during acquisition



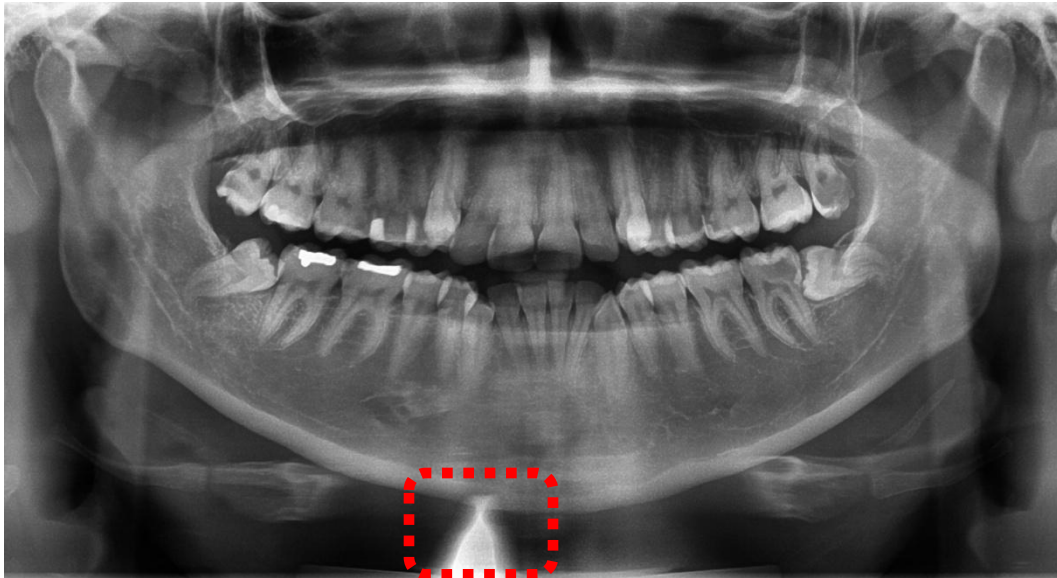
### ***Issue:***

- Portions of panorama are blurred.

### ***Solution:***

Instruct the patient to remain motionless during the acquisition

## 4. Panorama Troubleshooting Guide – Lead apron is not positioned correctly



### ***Issue:***

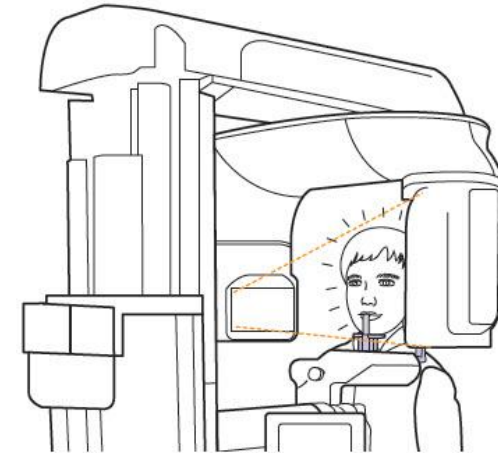
- A white triangular shaped appears along the bottom edge of the image

### ***Solution:***

Position the apron correctly so that the collar, and corners are flat against the patient's shoulders and neck.



## 4. Panorama Troubleshooting Guide – Image is Underexposed

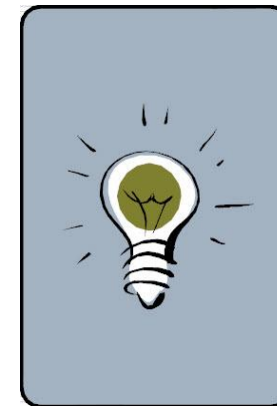


### ***Issue:***

The image is bright and washed out.

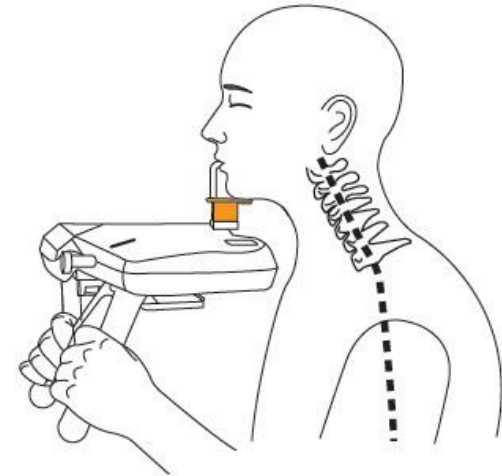
### ***Solution:***

Increase kVp and mA based on the morphology, culture and age of the patient.





## 4. Panorama Troubleshooting Guide – Image is overexposed



### ***Issue:***

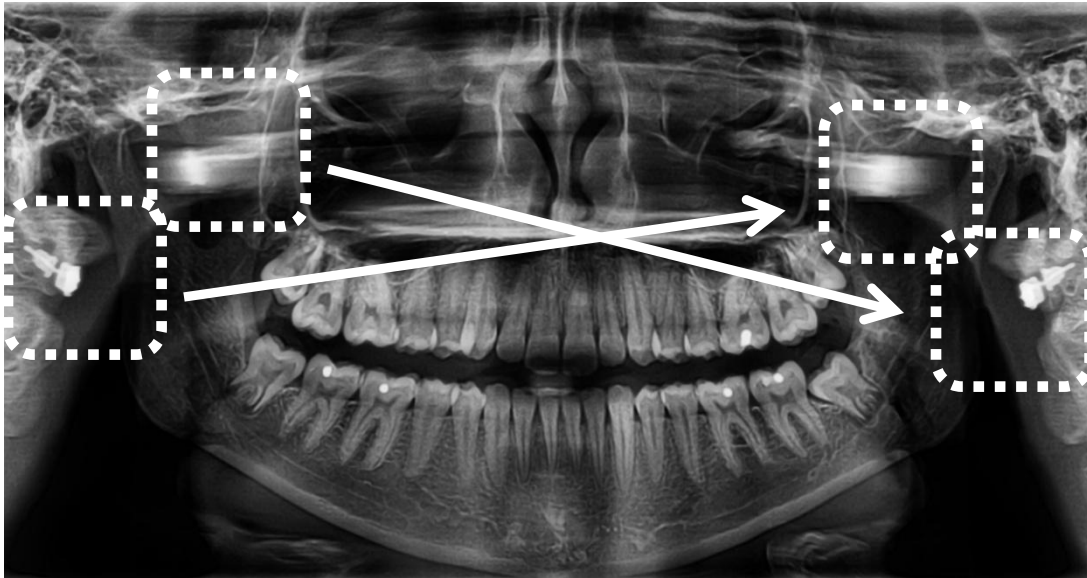
Image is dark.

### ***Solution:***

Decrease the kVp and mA based on the morphology, culture and age of the patient.



## 4. Panorama Troubleshooting Guide – Patient wearing jewelry



### ***Issue:***

White objects appear in multiple areas in the image

### ***Solution:***

Instruct the Patient to remove all jewelry, glasses, denture s and other metal objects above the neckline.



**Thank You**

***The World's Best  
Dental Imaging Company***