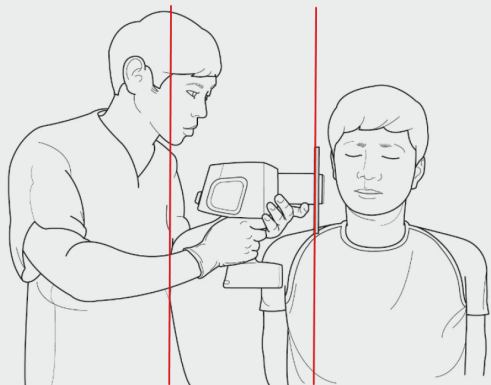


▼ OPERATOR POSITIONING



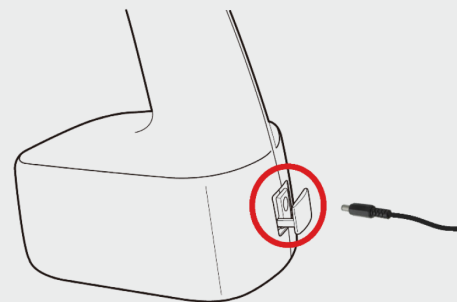
- Remain parallel to the back scatter shield.
- Place your EzRay Air P close to the patient for maximum protection during exposure.
- For difficult angles, adjust patient positioning and stay within the protection zone.
- Place the tube head as close to the patient as possible.

▼ SERVICE MODE

- Password Mode On/Off: n.16 for On and n.17 for Off.
- Change Password: Select n.24.
Turn and press the jog dial to change the password.
- Factory Default: Select n.01.
Once the control panel displays "YES", press the jog dial to restore factory default settings.



▼ CHARGE YOUR DEVICE



- Connect the battery charger to the adaptor connector located on the bottom back side of your EzRay Air P.
- The exposure function is disabled while the device is being charged.
- It is recommended to charge your device overnight on a daily basis.



QUICK START GUIDE

*Congratulations on your new EzRay Air Portable!
This Quick Start Guide will show you how to optimize
workflow and easily capture patient images.*

vatech

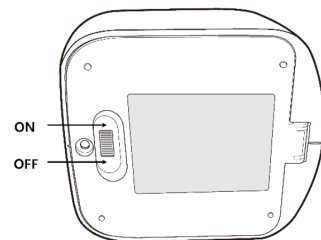
YOUR DEVICE

1. Back Scatter Shield
2. X-ray Beam Limiting Device
3. X-ray Exposure Button
4. Handle
5. Power Button
6. Battery
7. Adaptor Connector
8. Remote X-ray Exposure Switch Port
9. Strap Loop
10. Control Panel
11. X-ray Generator



ACTIVATE YOUR DEVICE

- Turn on your device utilizing the On/Off switch at the bottom of your device.

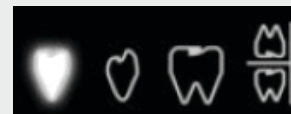


- Enter the Password. (Default: 000)

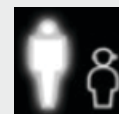


SELECT MODE

- On the Control Panel, turn the jog dial to toggle between different modes and press the jog dial to make your selection.



[*Tooth Type*]



[*Adult or Child*]



[*Exposure Time*]

ADJUST EXPOSURE TIME

- To decrease the exposure time, turn the jog dial to the left. To increase the exposure time, turn the dial to the right.
- Press the jog dial to make your selection.
- The exposure time can be adjusted from a minimum of 0.05 secs to a maximum of 1.0 secs.

